

Index

Compauto – partner of Placisa

About Placisa

Markets

Quick facts

Materials and machinery

Laboratory and testing

Certificates

Product examples

Product applications

Additional processes

Customers

Contact

Compauto – partner of Placisa

Compauto's background

Start

- Compauto was founded 1999 by seven medium-sized Spanish companies (no competitors)

Goal

- The goal was to get better access to the (German) automotive market in order to obtain new projects and to get support with existing ones

Today

- Compauto is since 2002 in the same ownership / management structure

Compauto – partner of Placisa

Compauto's main activities



Strategy and Business Development



Support with supplier onboarding process



Contract review and supervision / legal support



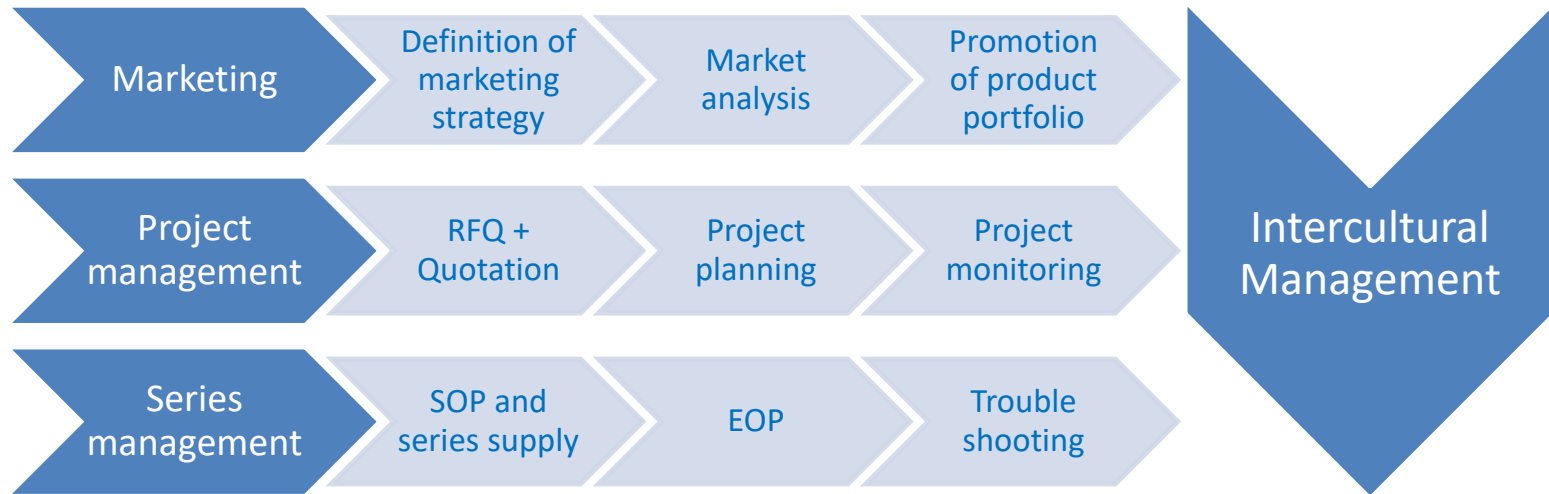
Project and series management



Monitoring of supply agreements

Compauto – partner of Placisa

Compauto's main services in detail



About Placisa

Placisa is located in Irun / Spain



PLACISA, S.L.

Oianzabaleta Kalea, 6
20305 Irun
Gipuzkoa
Spain

www.placisa.es

About Placisa

Placisa's headquarter



About Placisa

Placisa's figures



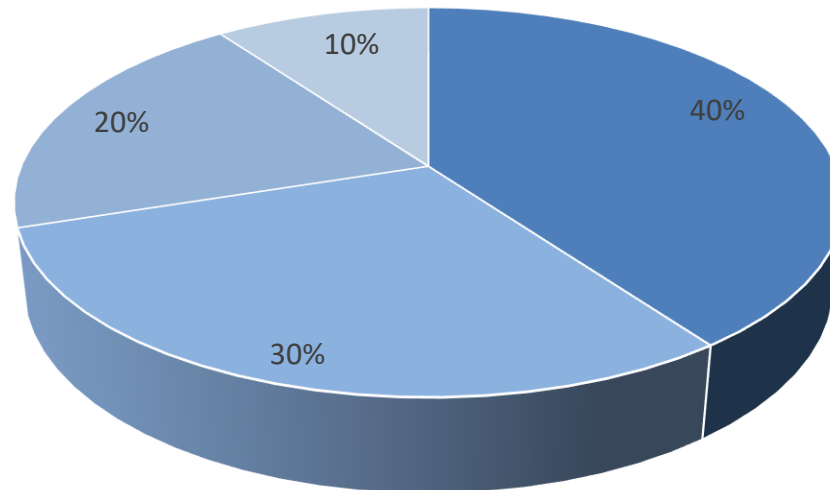
Total Turnover: 5.800.000€



Total number of employees: 28

Markets

Placisa's distribution of sales



■ Automotive ■ Electronics ■ Elevator & acces control ■ Others

Quick facts

Overview of some quick facts about Placisa

19 injection machines with clamping forces from 5 t to 430 t

3 injection machines 2K technology with clamping forces from 110 t to 350 t

Specialised in technical parts from 0.5 g to 900 g

Metal inserting in fully automated overmoulding technology

Assembly (e.g. O-rings, washers etc)

Fully automated visual inspection, dimensional and surface control

Materials and machinery

Overview of common materials and machinery

Raw materials

- PA6 + 15/30% GF
- TPV
- PPE
- PP + 10% GF
- etc

Injection machinery

- KraussMaffei
- Negri Bossi
- Engel
- Boy
- Sandretto

Other machinery

- 100% Visual inspection (UTP / Ausil systems)
- Internal tool shop for maintenance

Materials and machinery

Pictures of Placisa's machinery



Laboratory and testing

Placisa's laboratory and testing equipment



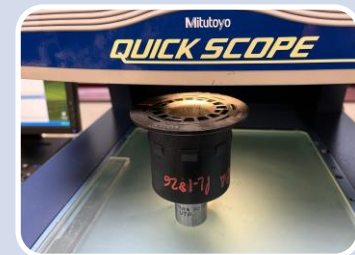
**Visual
inspection
machine**
(Parts
validation)



**3DCMM
machine**
(Dimension
measure &
validation)



**Optical
scanner**
(Dimension
measure &
validation)



**Vision
measuring
system**
(Dimension
measure &
validation)

Laboratory and testing

Placisa's laboratory and testing equipment



**Optical
profile
projector**
(Dimension
measure &
validation)



**Roughness-
meter**
(Roughness
measure &
validation)



**Hardness-
meter**
(Hardness
measure &
validation)



**Traction
testing
machine**
(Strenght
measure &
validation)

Certificates

Placisa holds the following certificates



IATF 16949

ISO 9001

Product examples

These are examples of Placisa's products



Quick connectors

- Weight: 3 g to 40 g
- Material: PA12+GF30, PPA+25%CF (Carbon Fiber) etc
- Application: Fluid handling



Cover

- Weight: 208 g
- Material: PA66+30%GF
- Application: Oil tank cover

Product examples

These are examples of Placisa's products



Spigot

- Weight: 58 g
- Material: PA66+30%GF / Brass (insert)
- Application: Fluid handling



Duct

- Weight: 94 g
- Material: PP+20%T and TPV 65 SHORE A
- Application: Air conduction

Product applications

Placisa's products have these applications



Quick connectors



Fluid Handling

Product applications

Placisa's products have these applications



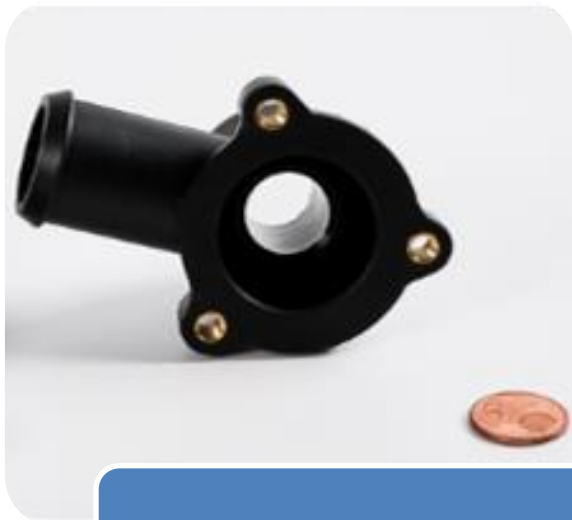
Cover



Oil tank cover

Product applications

Placisa's products have these applications



Spigot



Combustion sensor

Product applications

Placisa's products have these applications



Duct



Air conduction

Additional processes

Placisa provides the following additional processes

Internal

- Automatic and manual assembly
- Steam Chamber conditioning
- Hot water tank conditioning
- Welding (depending on volume)

External

- Chrome plating
- Painting
- Tampon printing
- Welding (friction/ultrasonic)

Customers

These are Placisa's direct customers



KNORR-BREMSE



Contact

Compauto's locations



Compauto GmbH

Germany (Headquarter)

Erbprinzenstraße 20
76133 Karlsruhe
Germany
Phone: +49 721 824 817 0
Fax: +49 721 824 817 11
Mail: info@compauto.de
Web: www.compauto.de

Spain (Representation)

31580 Lodosa (Navarra)
Spain
Phone: +49 162 777 144 4