



C
COMPAUTO GmbH

Komponenten für die Automotive- und Maschinenindustrie



CONTENT

About us

Markets

Processes

Machinery

Measurement / Quality Check / Testing

Certifications

Materials and treatments

Part weights and volumes

Our top products: Products and applications

Our customers

Our competitive advantage

Contact



ABOUT US



Established:	1966
Staff:	115
Turnover:	15.7 Mio €
Machining & Honing Area:	4,000 m ²
Location:	Zestoia / Spain



ABOUT US

Our partner in Germany

Goialde Components and COMPAUTO GmbH have been partners since 2012. Founded as a subsidiary company, COMPAUTO coordinates the cooperation with our customers in the following areas:

- Marketing
- RFQ
- Project management
- Contract design / modification management
- Quality management
- Troubleshooting



ABOUT US

What we do – Business fields

GOIALDE 
PRECISION

Short series, high-precision boring and machining

GOIALDE 
COMPONENTS

Machining of high and medium series of components mainly for Automotive and Hydraulics

GOIALDE 
HIGHSPEED

Design, manufacture and maintenance of high-speed spindles

We are working as a full service TIER1 supplier fulfilling Automotive OEM specifications and hydraulic OEM specifications.



Services delivered by COMPAUTO

Marketing

Project management

Troubleshooting & Aftersales

Define marketing strategy

Market analysis

Promotion of product portfolio

RFQ

Project planning

Prototype

Sampling & PPAP

SOP / series supply

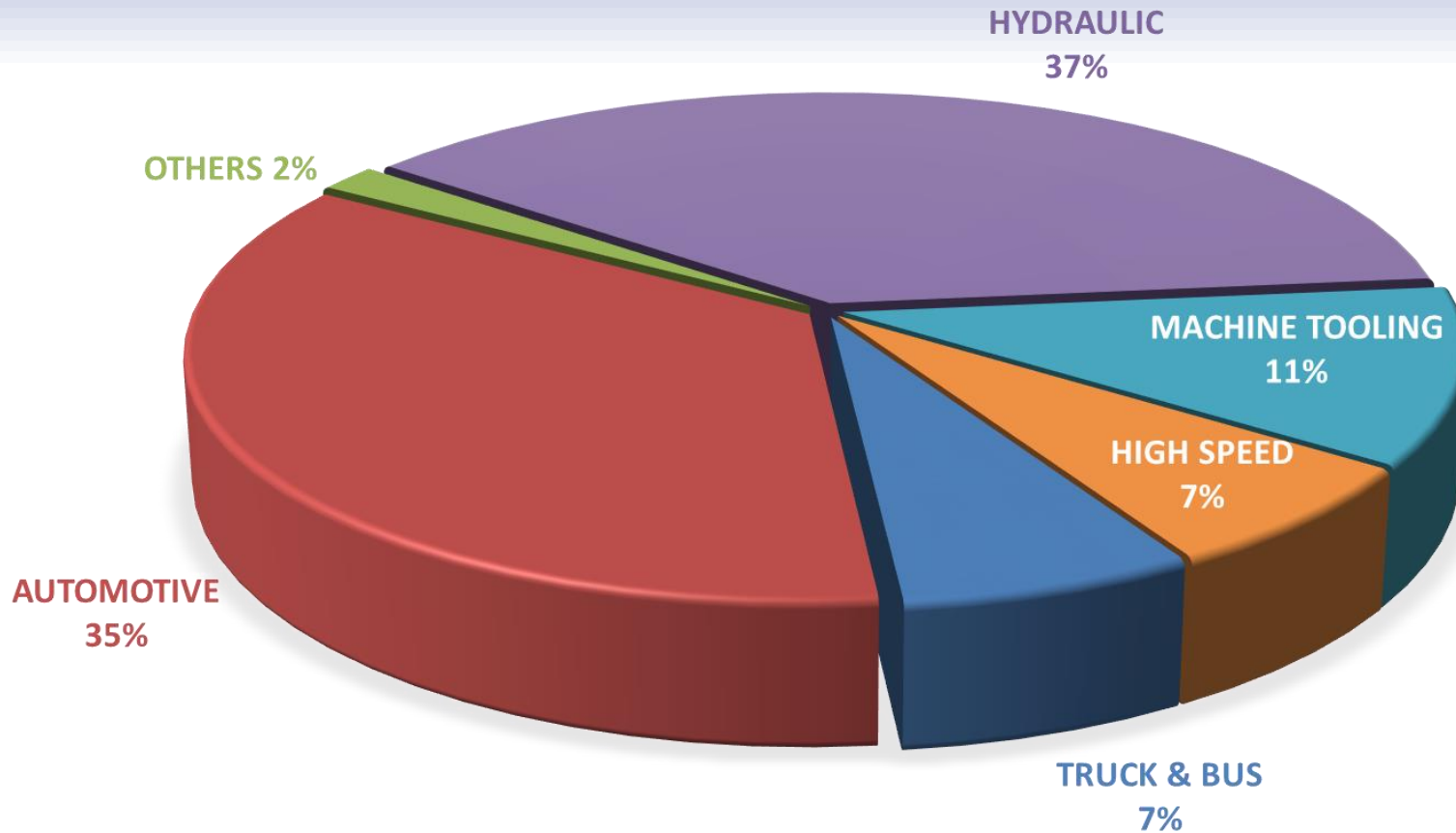
EOP / spare parts

Project procedure

Intercultural Management
(mentality, communication styles, etc.)



MARKETS



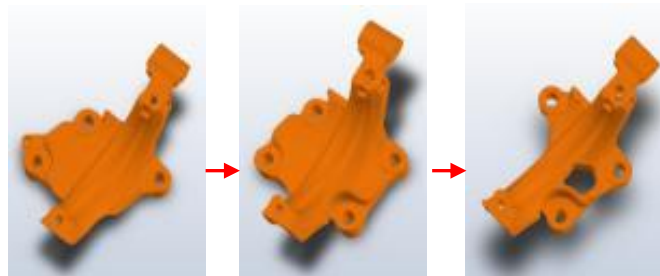
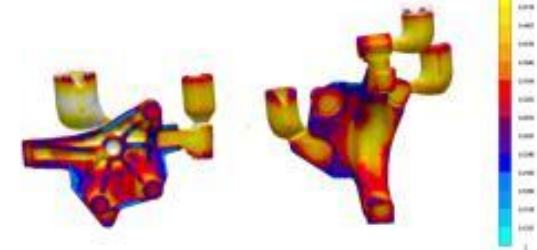
PROCESSES DATA TRANSFER

- Flexible collaboration with state of art CAD-Systems

	PTC Creo (Pro/E)	CATIA	Solid Works	AutoCad	MasterCAM	SolidCast	MagmaSoft
Goialde	X		X	X	X		
Foundry	X	X	X	X		X	X
Forging	X	X	X	X			



- Computer simulation of casting processes with MAGMA and SolidCast
- Examination of potential savings through optimization of:
 - material quality
 - parts weight
 - manufacturing process



PROCESSES PROTOTYPING

Prototype sand casting with hand- or mechanical moulding:

Hand moulding method:

- 1-5 parts
- In a time frame of 3 weeks

Mechanical moulding method:

With a flexible range of machinery and equipment:

- Up to 100 parts
- In a time frame of 4 – 6 weeks
(depending on quantity)



PROCESSES CASTING

Iron

Materials:

- Grey Iron
- Nodular Iron

Casting procedures:

- Sand casting with hand moulding
- Sand casting with DISAMATIC
- Horizontal moulding



Steel

Materials:

- Carbon steel
- Refractory Steel
- Stainless steel.

Manufacturing procedures:

- Casting with mechanical or hand moulding
- Lost-Wax Casting
- Forging



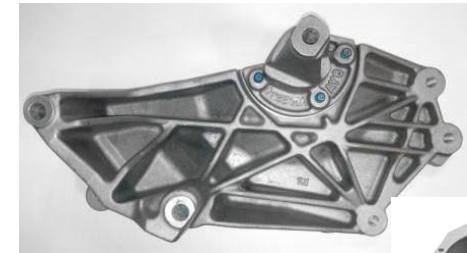
Aluminium

Materials:

- All types of material

Manufacturing procedures:

- Hand moulding
- Pressure-Die Casting
- Forging



Processes

Forging

Prototype sand casting with hand- or mechanical moulding:

Production range:

- 0,2 kg – 12 kg
- Medium to high production batches

Steel types:

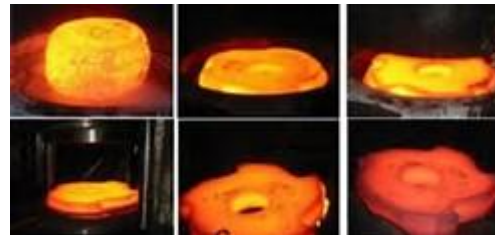
- Carbon (St-52.3, C35, C45...)
- Alloyed (16MnCr5, 42CrMo4, 34Cr4...)
- Microalloyed (38MnVS6, 34CrNiMo6...)
- Stainless (1.4509, 1.4301, 1.4713...)

Forging Methods:

- Drop Forging
- Press Forging

Alcorta⁷
FORGING GROUP

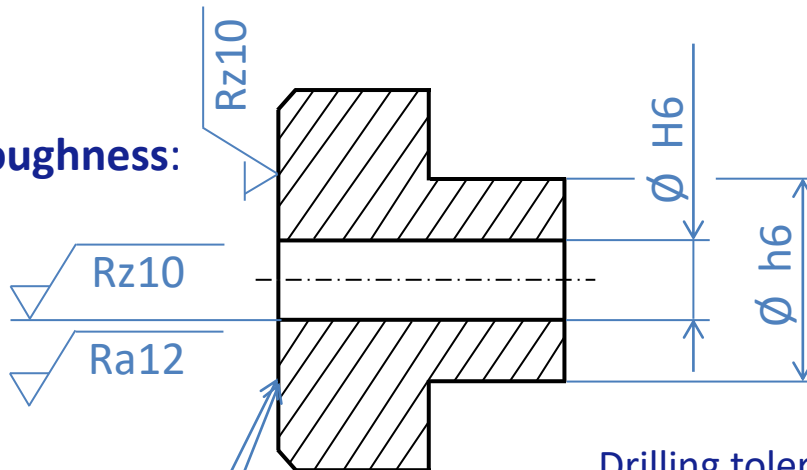

FORJAS DE BERRIZ, S.L.



PROCESSES MACHINING

Which tolerances can be achieved with our equipment?

Surface roughness:



Flatness:

Milling:		0,005
Turning:		0,008

Drilling tolerances:
For deep drilling there is no exact limit, we have parts with 400 mm deep drilled holes

- Vertical and horizontal centers
- Vertical and horizontal lathes
- Flexible automated cells
- Transfer machines and robots
- Collaboration with **TEKNIKER** technological centre



PROCESSES

HIGH PRECISION FINISHING

Grinding

Honing

Lapping

Thermal Deburring

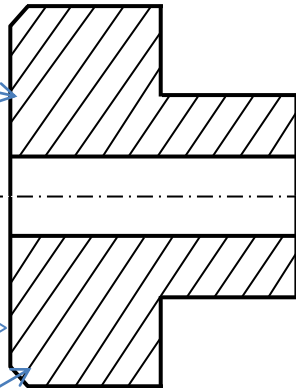
Grinding:

 0,005

Lapping:

 0,001

Ra0,3



$\varnothing \pm 0,001$

Honing:

Ra0,2



Before

After



PROCESSES SURFACE COATING

We fulfil all OEM standard specifications regarding surface coatings.
Following treatments can be sub-contracted locally:

Cathodic (Electrodeposition, CED, KTL):

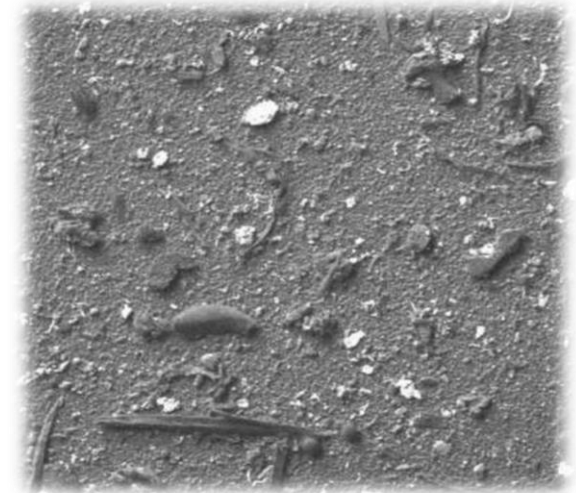


Zinc Coating (Galvanization):

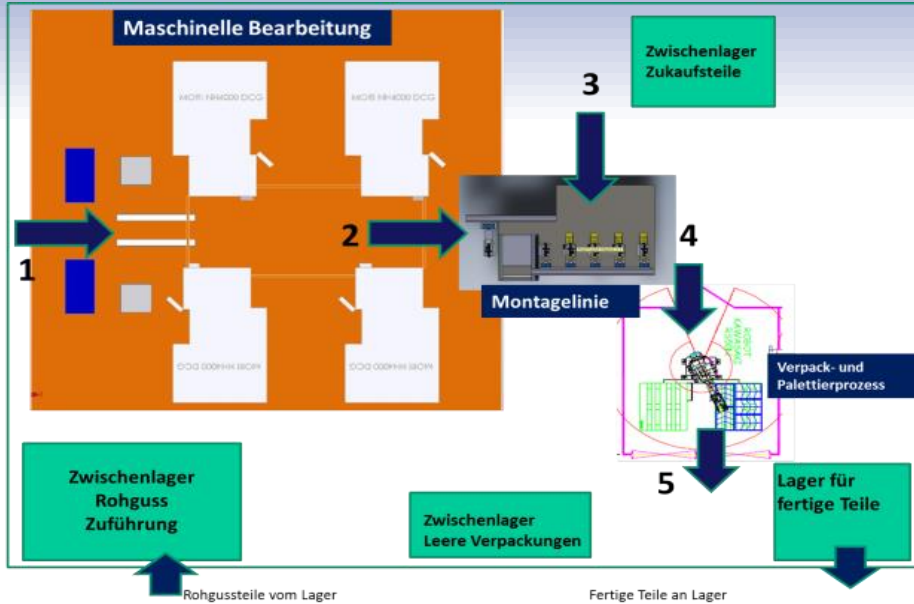


PROCESSES CLEANING

We fulfill the most exigent cleanliness standards, ensuring the fulfilling of requirements in mass contamination and metallic particle size, taking account the relevant regulated standard ISO 16232



PROCESSES ASSEMBLY



- Assembly process in a closed manufacturing cell
- Integrated quality inspection
- Accurate tracing capability DATA-MATRIX

1. Cast and surface coated part



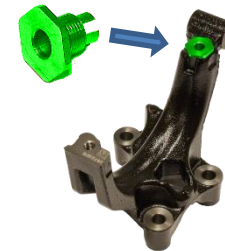
2. Machining



3. Cleaning - Washing



4. Assembly of purchased parts



5. Data-Matrix for Traceability Control



PROCESSES PACKAGING / LOGISTICS

- We can develop protective packaging according to specifications made by our customers.
- In addition, we develop alternative packaging solutions and logistic concepts with our customers.



OUR MACHINERY

M
A
C
H
I
N
E

P
A
R
K

TYPE	MAKE	MODEL	WORKSIZE
Horizontal Machining Centre	MORI SEIKI	SH 50	630x630x680
		(3) SH 500	630x630x680
		SH 5000	630x630x680
		(2) SH 403	560X560X580
		(7) NH 4000 DCG	560X560X580
		(4) NHX 4000	560X560X580
		(4) NH 5000 (1NHX+3NH)	730X730X780
	MATSUURA	(3) H.Plus-405	730X730X780
	MATSUURA	H.Plus-500	800X800X800
	MATSUURA	H.Plus-300	500x560x500
SW	(2) BA-400-2 (double); BA-322 (dou.)	300x300x400	
Honning machine	Sunnen	VSS2	
Automated assembly lines	(6) Shaft, bush, screw and other subcomponent assembly stations		
Cleaning Machines	(2) Washing Stations (2) Washing lines (6) Automated air blowing stations		
Vertical Machining Centre	CHIRON 5-Axis	FZ 15	250x250x400
	ANAYAK	MATIC 15	800x400x300
CNC Turning Machine	FAMAR	(6) PRONTO 5	∅ 325
	CMZ Double-Spindle	TL 25 A MS	∅ 280
Testing lines	Leakage test line		
CMM	MITUTOYO + DEA+ ZEISS DURAMAX	900x1000x600, 1500x1300x1000 and	



OUR MACHINERY



Machining Centre
Mori Seiki NH 5.000



Machining Centre
Matsuura H.Plus-405

OUR MACHINERY



Machining Centre
SW BA-400-2



CNC Turning Machine
Famar Pronto 6



OUR MACHINERY



Honing Machine
Sunnen VSS2



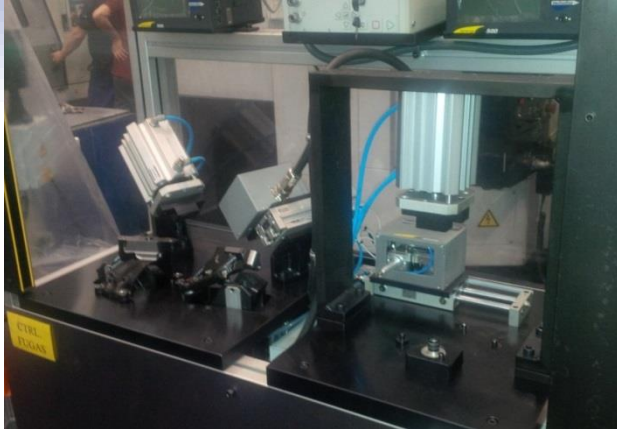
Washing Line



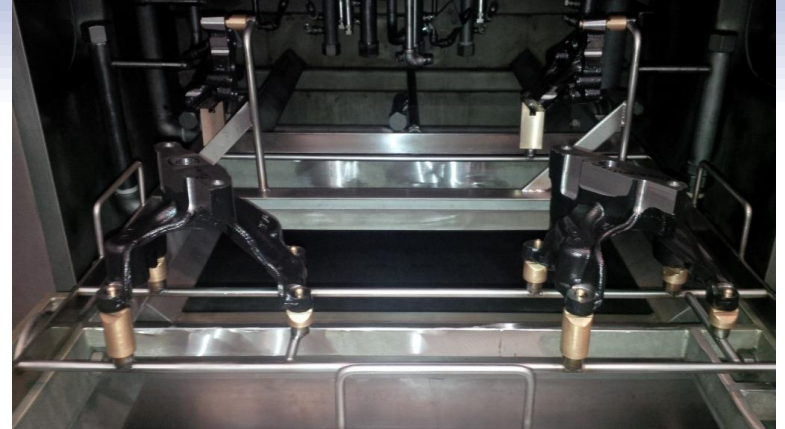
CMM
Zeiss Duramax

OUR MACHINERY

Leak Test



Cleaning Lines / Machines



Robotized Cells



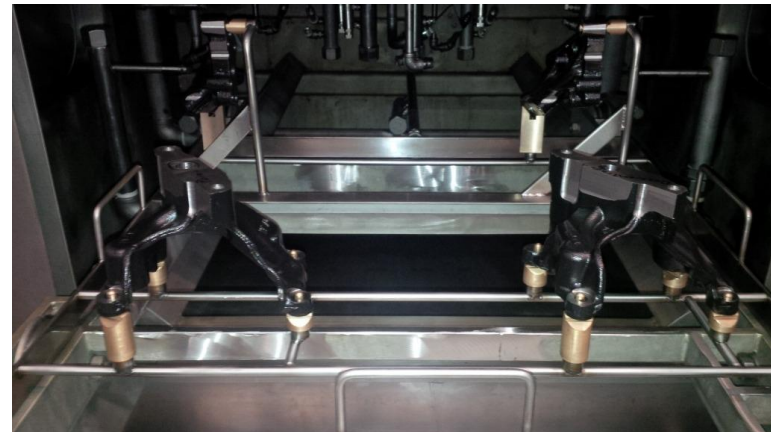
Assembly Cells



OUR MACHINERY

Washing installations / Cleaning lines

Overview Cleaning lines / Washing installations		
Type	Brand	Max. work space size
Washing machine	Baufor	800x800x800
Cleaning Line	Teknox	300x300x500
Cleaning Line	Fast Ind.	600x600x600



Measurement / Quality Check / Testing

Mitutoyo Euro-C A9106

CMM-3D measuring machine (portal design)

Measuring range: $900 \times 1000 \times 600$ [mm]

Measurement uncertainty: $2,5$ [μm]



DEA Scirocco

CMM-3D measuring machine (portal design)

Measuring range: $1500 \times 1300 \times 1000$ [mm]

Measurement uncertainty: 5 [μm]



CERTIFICATIONS

Certificate

Standard **IATF 16949:2016**
(1st edition, 2016-10-01)
Certificate Registr. No. 01 111 104389
IATF Certificate No. 0438575

Certificate Holder: **PUNTEADOS DE PRECIACIÓN GOIALDE, S.L.**
Pol. Ind. Sansinenea Erreka - Parcela A1
20740 Zestoa Guipuzcoa
Spain

Scope: Precision machining of series components
Excluding Product Design

Validity: Proof has been furnished by means of an audit that the requirements of IATF 16949:2016 are met.
The certificate is valid from 2021-12-18 until 2024-12-17.

Release date: 2021-12-18


TÜV Rheinland Cert GmbH
Am Grauen Stein - 51105 Köln
Germany - NRW

1 / 1

Certificate

Standard **ISO 14001:2015**

Certificate Registr. No. 3.00.20010

Certificate Holder: **PUNTEADOS DE PRECIACIÓN GOIALDE, S.L.**
Pol. Ind. Sansinenea Erreka - Parcela A1
20740 Zestoa (Gipuzkoa)
Spain

Scope: Precision machining and assembly of metallic components

Proof has been furnished by means of an audit that the requirements of ISO 14001:2015 are met.

The due date for all future audits is 10-08 (mm-dd).

Validity: The certificate is valid from 2020-12-23 until 2023-12-22.
First certification 2020

2021-02-15


TÜV Rheinland Inspección, Certificación e Testing S.A.
Garroba, 10-12 - E-08020 El Prat de Llobregat

www.tuv.com



VOLKSWAGEN
AKTIENGESELLSCHAFT

GOIALDE, S.L.

SANSINEEA ERREKA INDUSTRIALDEA, PARC.
20740 , ARROA-ZESTOA
D&B D-U-N-S® Number: 47-297-9863

obtuvo durante la /
do acuerdo a

Formel

el siguiente resulta

Denominación grup

Ensamblar partes

Mecanizado




Andia Navarra, J.
Resp. Calidad Procc

Certificate

Standard **ISO 9001:2015**

Certificate Registr. No. 01 100 104389

Certificate Holder: **PUNTEADOS DE PRECIACIÓN GOIALDE, S.L.**
Pol. Ind. Sansinenea Erreka - Parcela A1
20740 Zestoa
Spain

Scope: High precision machining of steel and cast iron parts for machine-tool, tooling and aeronautics

Validity: Proof has been furnished by means of an audit that the requirements of ISO 9001:2015 are met.

The certificate is valid from 2022-01-04 until 2025-01-03.
First certification 2019

2022-02-16


TÜV Rheinland Cert GmbH
Am Grauen Stein - 51105 Köln

www.tuv.com



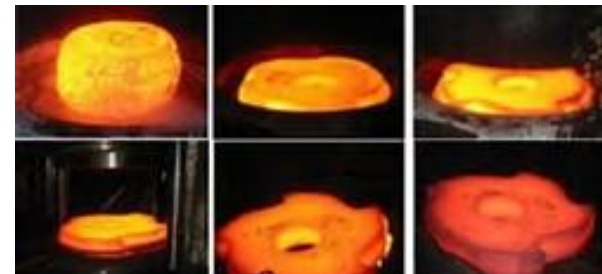
We are certified according to:

- ISO 9001
- IATF 16949
- ISO 14001:2015



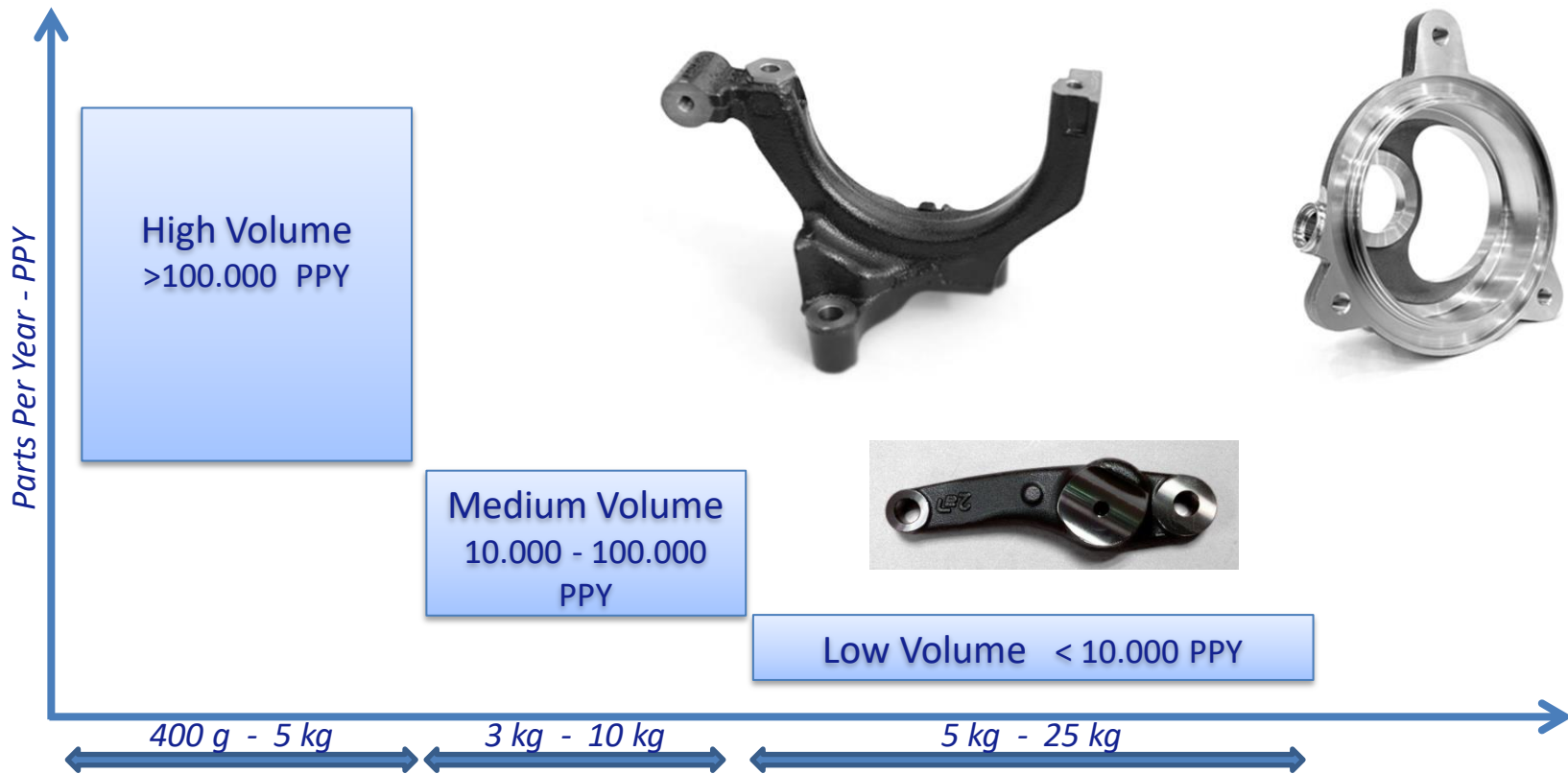
MATERIALS AND TREATMENTS

Specification	
Raw materials 	CAST IRON <ul style="list-style-type: none">*Nodular*Grey*SiMo (other alloys)
	STEEL <ul style="list-style-type: none">*Forged Steel*Precision Casting*Sintered
	ALUMINUM <ul style="list-style-type: none">*Die Casting*Gravity Casting
Treatments	Surface Treatments <ul style="list-style-type: none">*KTL Coatings*ZnNi Coatings*Powder Painting*Primings
	Heat Treatments <ul style="list-style-type: none">*Tempering*Nitro Carburating



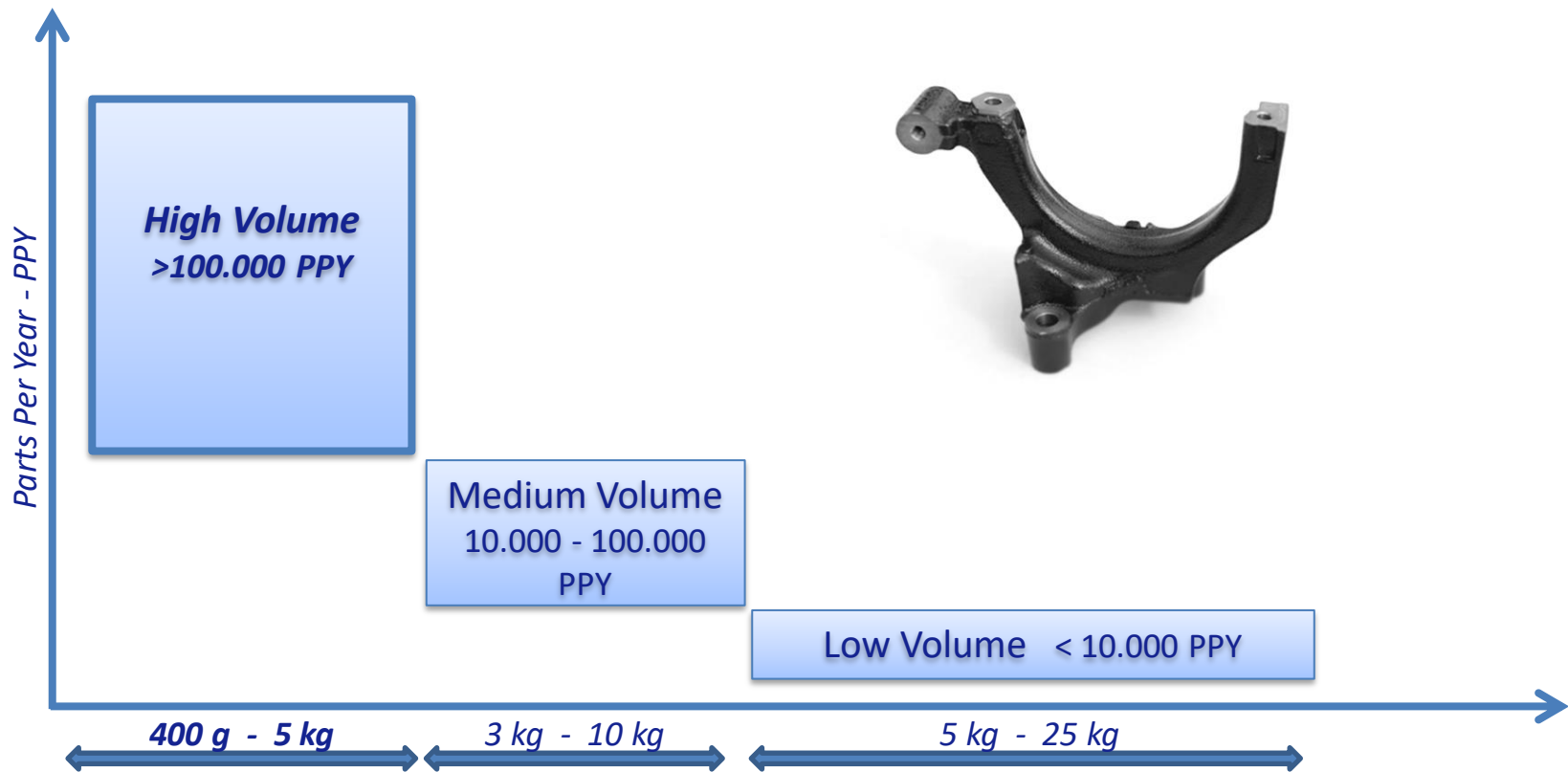
PART WEIGHTS AND VOLUMES

Maximum size of producible parts: 400 g – 25 kg



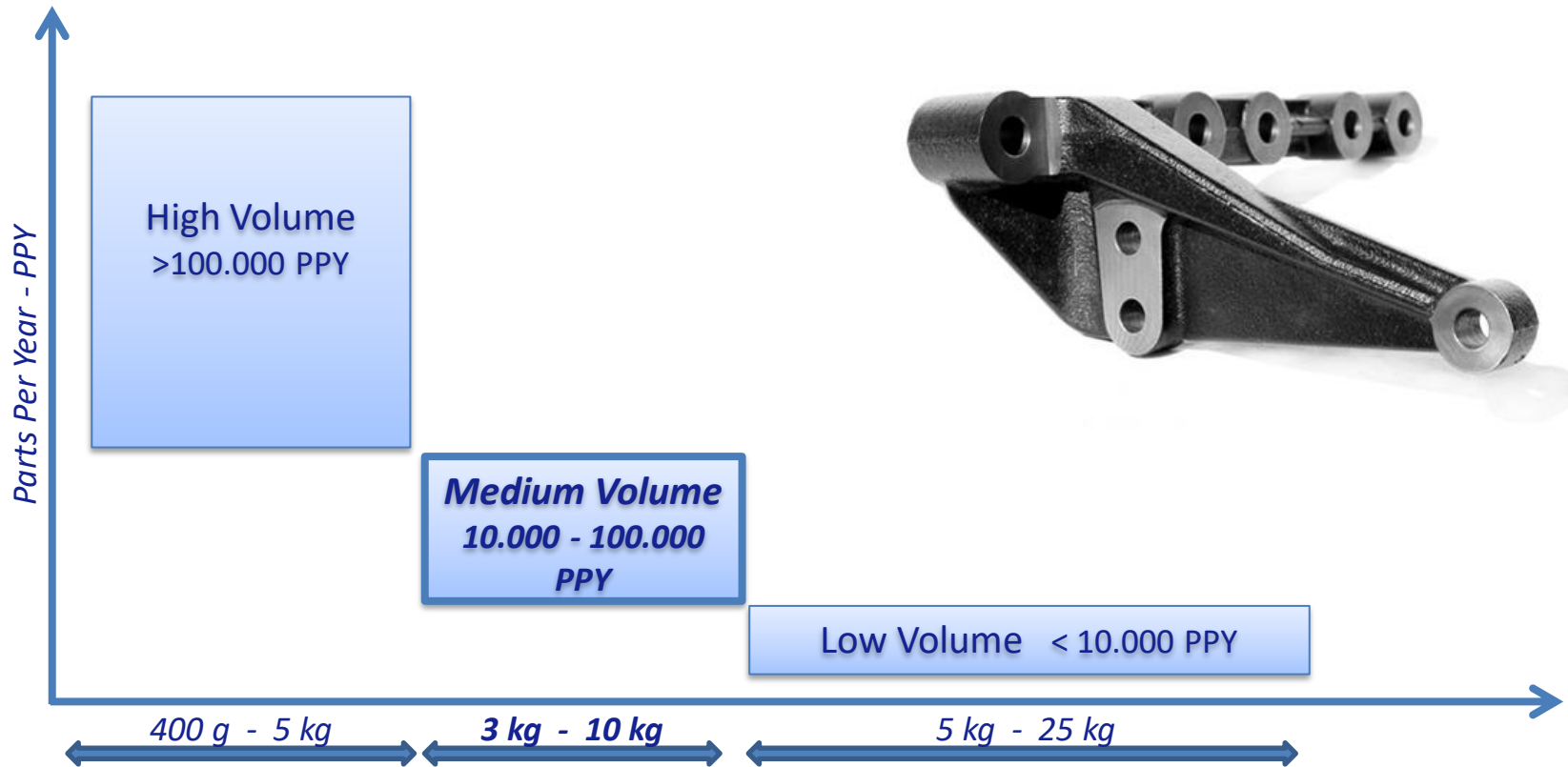
PART WEIGHTS AND VOLUMES

Maximum size of producible parts:



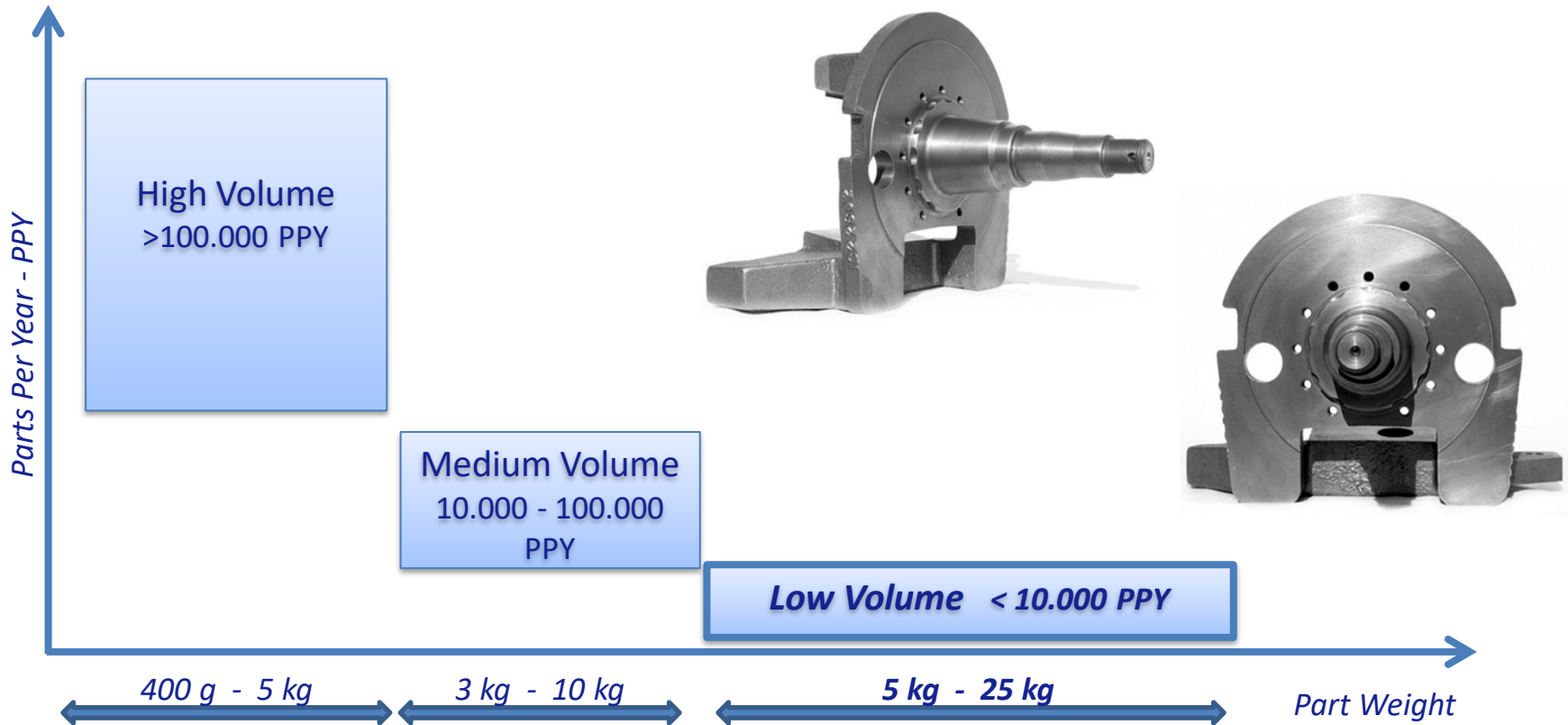
PART WEIGHTS AND VOLUMES

Maximum size of producible parts: 400 g – 25 kg



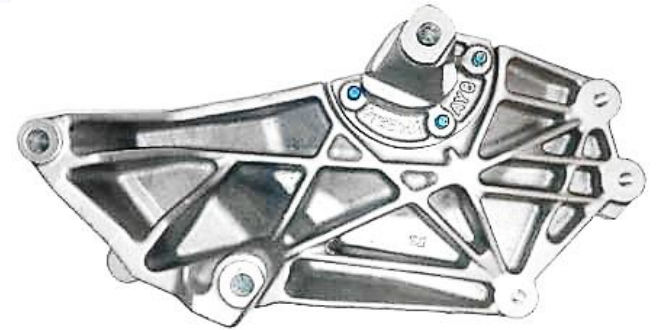
PART WEIGHTS AND VOLUMES

Maximum size of producible parts:



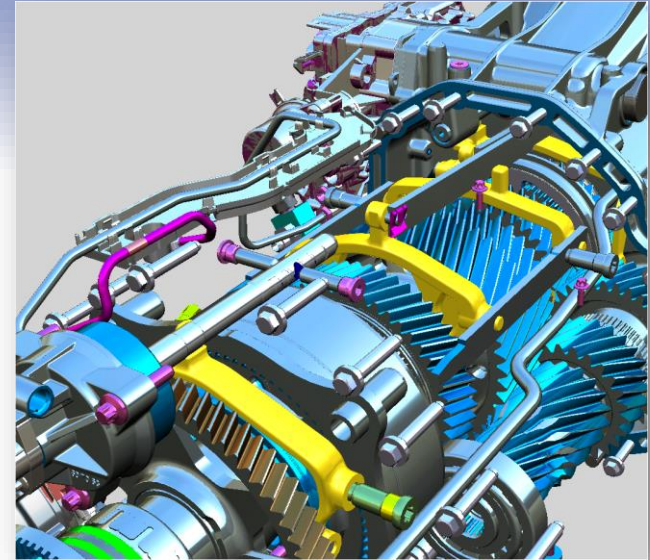
PRODUCTS AND APPLICATIONS

Automotive



PRODUCTS AND APPLICATIONS

Bus & Truck



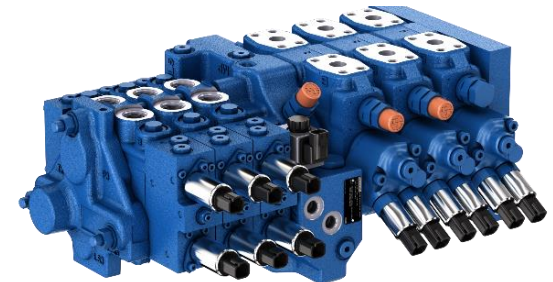
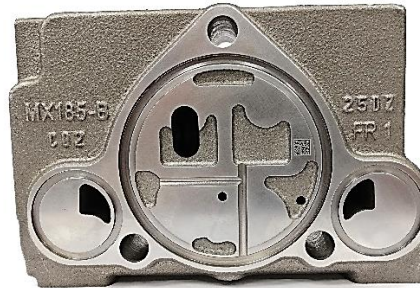
PRODUCTS AND APPLICATIONS

Hydraulics



PRODUCTS AND APPLICATIONS

Hydraulics



PRODUCTS AND APPLICATIONS

Other Sectors



OUR TOP PRODUCTS

Bracket for Exhaust Gas Components

GGG50 1,5 [kg] –
ca. 800.000 pcs / year



Exhaust Connection

Forged 1.4304 1,5 [kg] –
ca. 180.000 pcs / year



Bearing holder

02Z311207 0,52 [kg] –
ca. 75.000 pcs / year



Brackets for Turbochargers GJS 600 1.3 [kg], Exhaust Gas Pipe GG250 3,2 [kg] and others –
in total ca. 250.000 pcs / year



OUR TOP CUSTOMERS

OEM



Tier 1



Tier 2



OUR COMPETITIVE ADVANTAGE



GOIALDE offers a „One-Stop-Solution“ for components and modules ready for assembly made from different metallic materials (casting, forging or other processes).



We manage and control very carefully all the processes from the sourcing of raw materials to the delivery of a component or modules ready for assembly.



Intercultural management, proximity to the customer and trouble shooting throughout the entire project complete our integrated approach.



Our corporate culture, trust and flexibility are the backbone of our business relationships.



CONTACT

Germany

Technical sales and project development

Compauto GmbH

Erbprinzenstraße 20
76133 Karlsruhe

Tel: +49 721 824-817 0

Fax: +49 721 824-817 11

E-Mail: info@compauto.de
www.compauto.de

Spain

Headquarter and production plant

Goialde Components

Pol. Ind. Sansinenea Erreka A1
20740 Zestoa / Gipuzkoa
www.goialde.com

